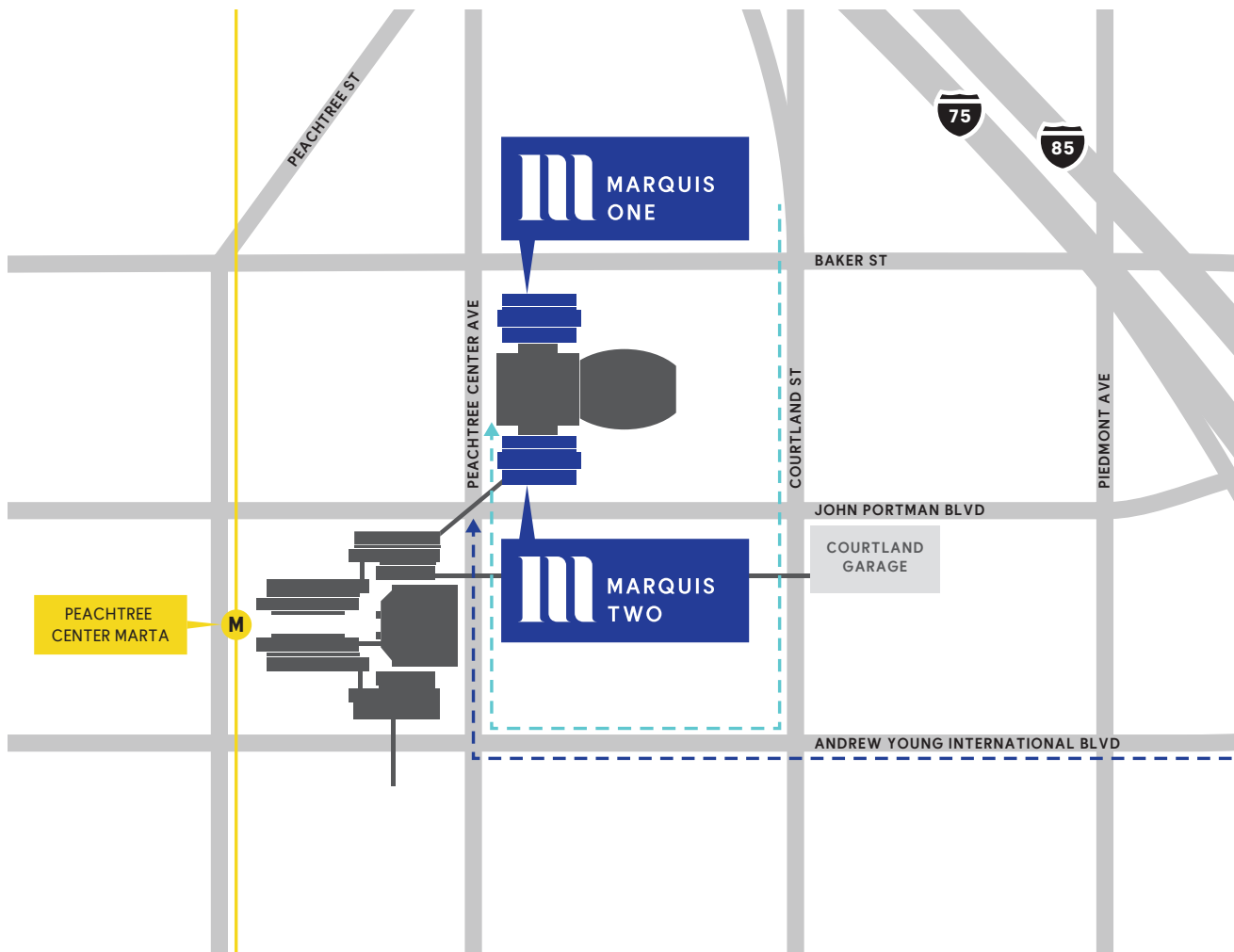




MARQUIS
TOWERS

DIRECTIONS



FROM THE NORTH

- Head south on I-75/85 to the Courtland Street Exit, 249A
- Take Courtland Street to International Blvd
- Turn right onto International Blvd
- Head west on International towards Peachtree Center Ave
- Turn right on Peachtree Center Ave
- Marquis Towers will be on your right

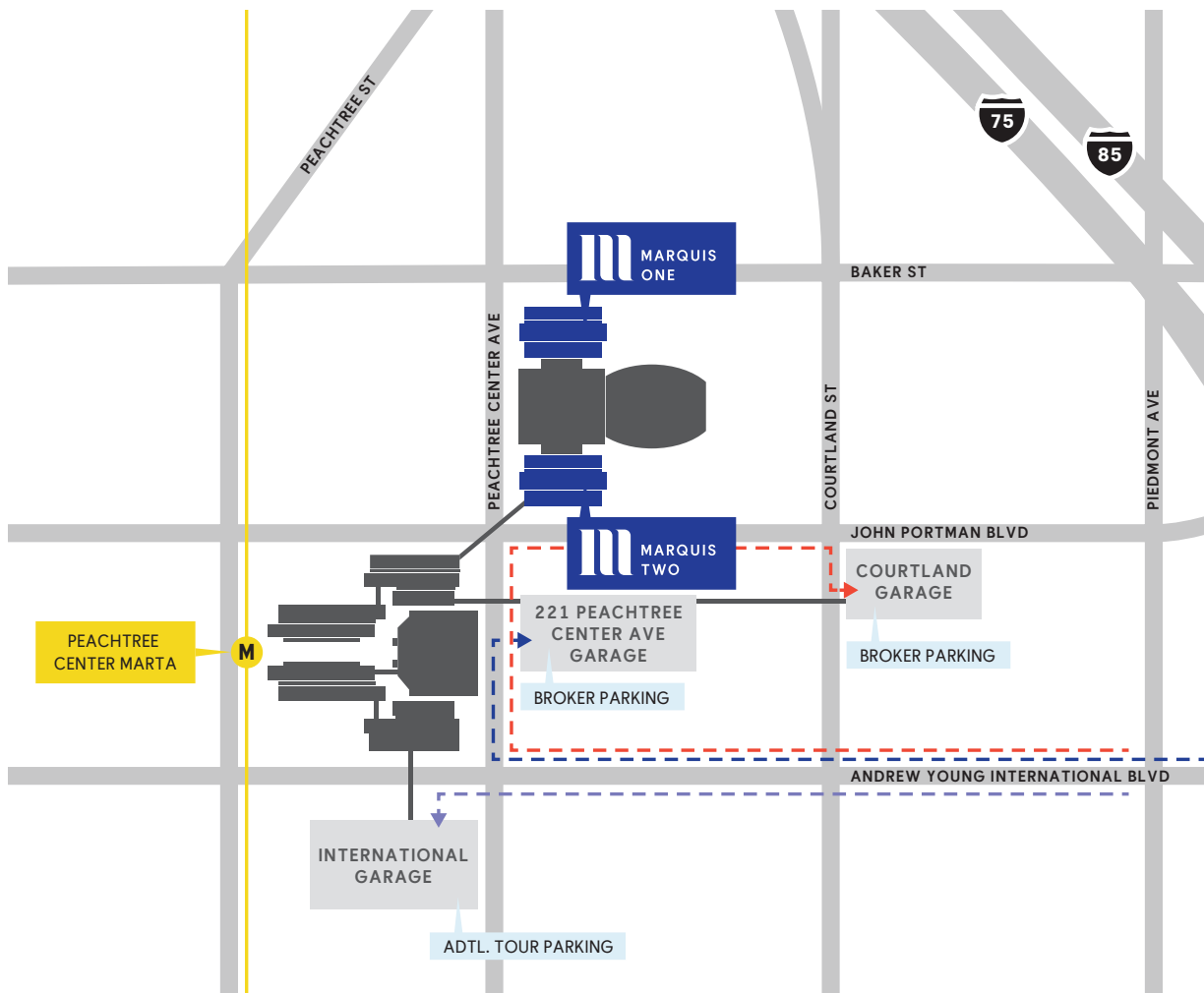
FROM THE SOUTH

- Head north on I-75/85 to the International Blvd Exit
- Turn left off of the exit onto International Blvd (towards Downtown)
- Head west on International Blvd towards Peachtree Center Ave
- Turn right on Peachtree Center Ave
- Marquis Towers will be on your right

FROM EAST OR WEST

- Take I-20 to Atlanta
- Merge on to I-75/85 North and follow directions above **FROM THE SOUTH**

Call 404.524.3787 with questions



PARKING IN 221 PEACHTREE CENTER AVE GARAGE

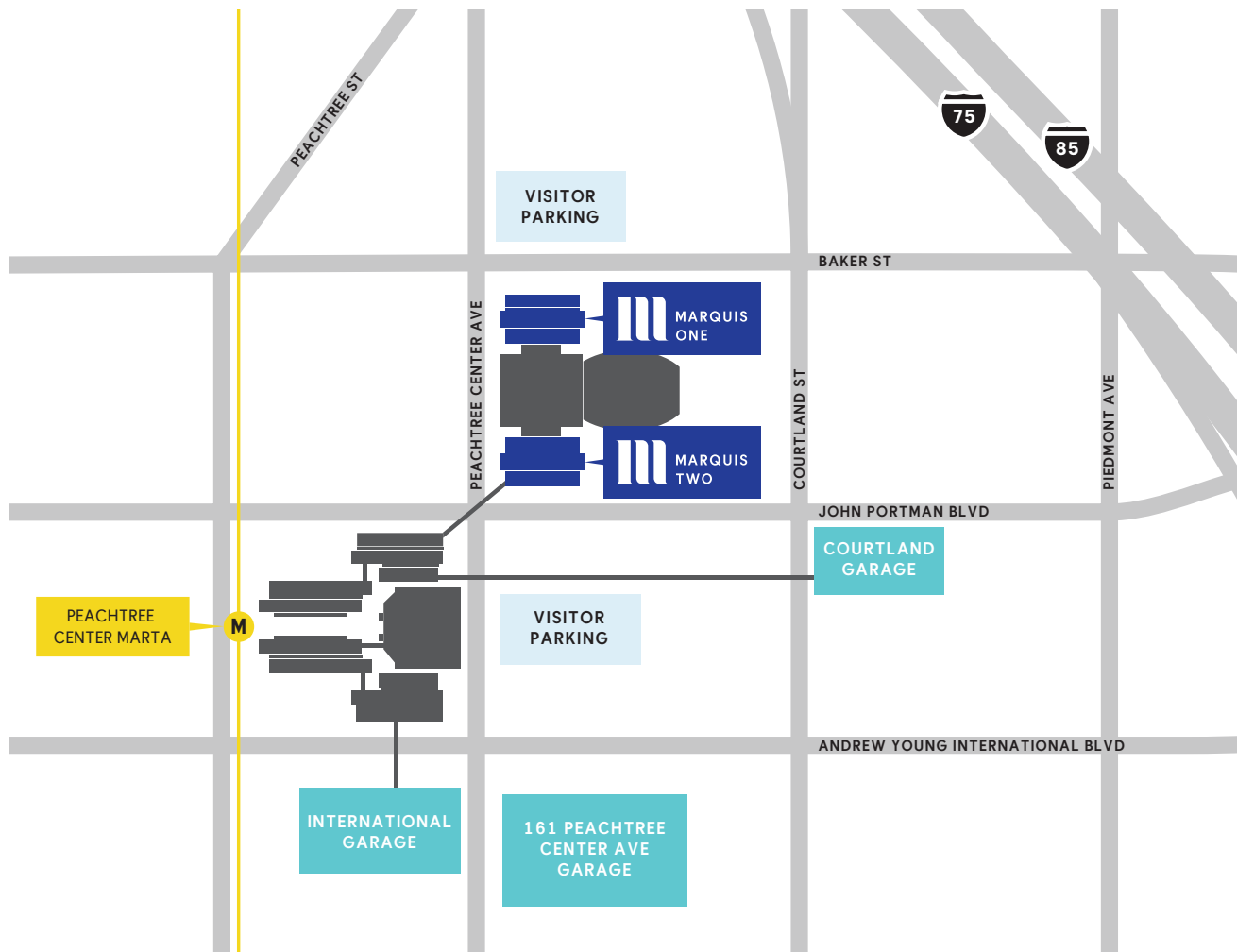
- From International Blvd, get into the far right lane
- Turn right onto Peachtree Center Ave
- Garage will be on your right

PARKING IN COURTLAND GARAGE

- From International Blvd, get into the far right lane
- Turn right onto Peachtree Center Ave, and then a second right onto John Portman Blvd
- Turn right onto Courtland St and Courtland Garage will be on the left
- If taking the Courtland Street exit, get in your far left lane, cross over John Portman Blvd and turn left into the garage

PARKING IN INTERNATIONAL GARAGE

- From International Blvd, get into the far left lane
- Cross over Peachtree Center Ave
- Turn left into the International Parking Garage, just after Hsu's Gourmet Chinese



**MARQUIS I RESERVED PARKING
(BELOW BUILDING)**

- .3:1,000 Ratio
- \$170 Reserved

**MARQUIS II RESERVED PARKING
(BELOW BUILDING)**

- .3:1,000 Ratio
- \$170 Reserved

**PARKING IN INTERNATIONAL
GARAGE**

- \$140 Non-reserved

PARKING IN COURTLAND GARAGE

- \$115 Non-reserved
- \$135 Reserved

**PARKING IN 161 PEACHTREE CENTER
AVE GARAGE**

- \$100 Non-reserved
- \$155 Reserved